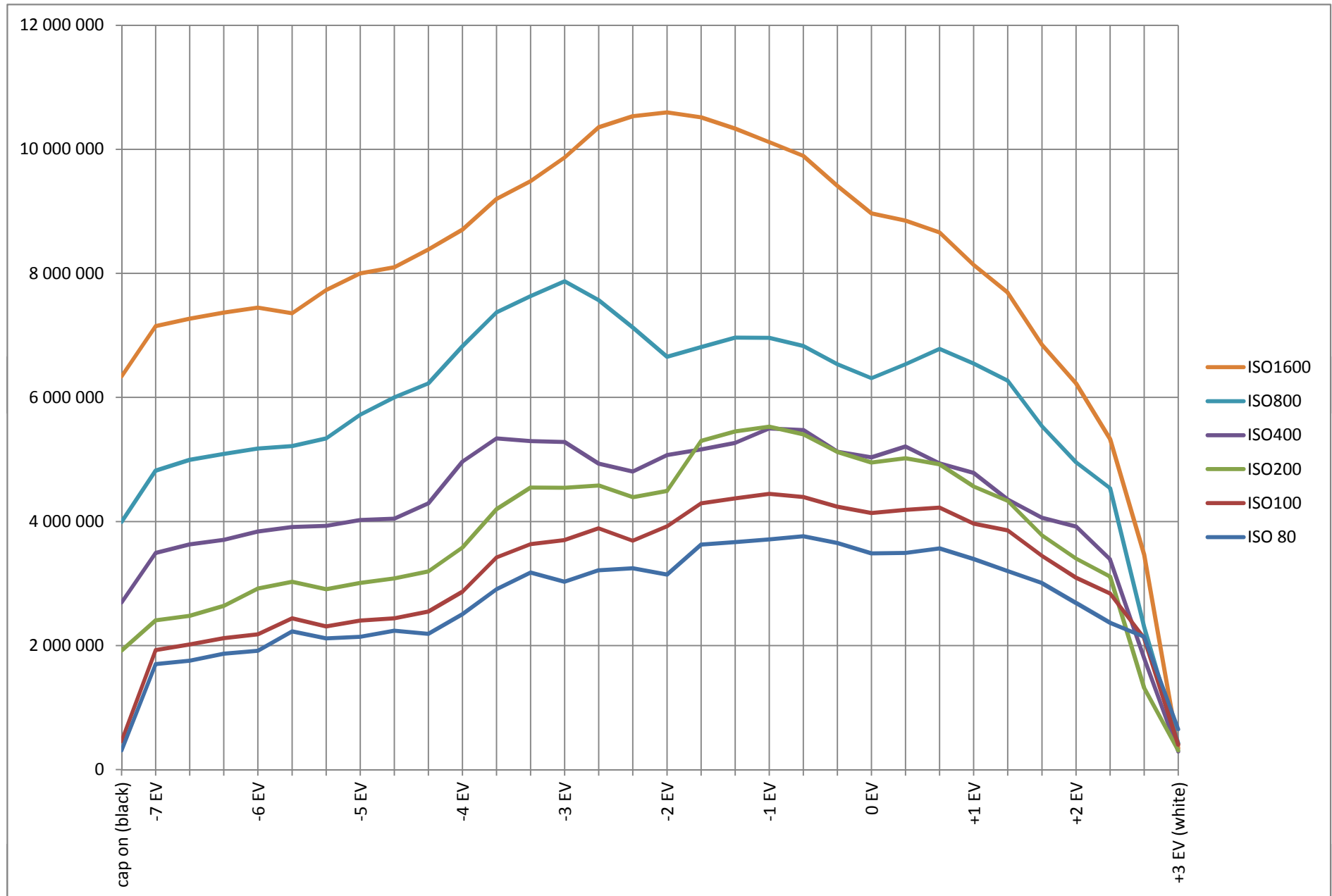


# File size as a measure of picture noise in Canon PS-G10

as a function of EV



**Notice:** - black - noise is still visible.  
- white - no noise is observed due to signal saturation.

# File size as a measure of picture noise in Canon PS-G10

as a function of EV

		ISO 80	ISO100	ISO200	ISO400	ISO800	ISO1600
1/2000	cap on (black)	308 076	456 784	1 919 494	2 693 912	3 991 096	6 337 549
1/2000	-7 EV	<b>1 700 000</b>	1 926 738	2 407 232	3 494 658	4 819 962	7 148 752
1/1600		1 755 236	2 017 429	2 479 376	3 632 824	4 995 873	7 270 139
1/1250		1 867 925	2 118 451	2 638 961	3 702 490	5 088 654	7 368 291
1/1000	-6 EV	1 916 731	2 180 024	2 917 656	3 836 824	5 176 755	7 447 651
1/800		2 229 610	2 440 634	3 027 481	3 910 780	5 216 152	7 356 092
1/640		2 113 978	2 310 063	2 909 408	3 927 718	5 341 363	7 729 488
1/500	-5 EV	2 140 740	2 401 105	3 011 167	4 025 553	5 721 805	7 998 624
1/400		2 239 516	2 437 579	3 083 000	4 046 929	6 002 715	8 098 352
1/320		2 186 657	2 549 095	3 193 937	4 293 369	6 225 251	8 384 950
1/250	-4 EV	2 505 513	2 867 723	3 579 023	4 965 567	6 824 967	8 705 552
1/200		2 908 112	3 419 484	4 198 951	5 339 446	7 372 528	9 198 012
1/160		3 177 942	3 634 611	4 546 833	5 294 430	7 633 087	9 486 105
1/125	-3 EV	3 026 942	3 701 440	4 543 854	5 279 790	7 871 569	9 867 135
1/100		3 214 425	3 890 890	4 579 855	4 933 591	7 566 025	10 355 668
1/80		3 246 050	3 690 654	4 392 820	4 805 811	7 126 144	10 534 853
1/60	-2 EV	3 142 910	3 921 357	4 491 707	5 070 766	6 654 729	10 594 677
1/50		3 627 542	4 292 259	5 298 114	5 162 250	6 812 992	10 516 642
1/40		3 666 864	4 371 994	5 451 036	5 268 402	6 963 401	10 333 005
1/30	-1 EV	3 711 773	4 444 991	5 527 639	<b>5 500 000</b>	6 961 797	10 114 324
1/25		3 760 885	4 393 466	5 406 388	5 474 654	6 831 174	9 893 114
1/20		3 652 102	4 238 369	5 121 457	5 123 529	6 533 751	9 408 795
1/15	0 EV	3 487 384	4 138 025	4 951 879	5 034 444	6 311 752	8 967 419
1/13		3 493 625	4 186 429	5 019 199	5 209 320	6 535 433	8 852 271
1/10		3 565 208	4 222 167	4 921 835	4 936 213	6 781 562	8 657 489
1/8	+1 EV	3 395 874	3 964 947	4 564 721	4 783 545	6 547 203	8 134 440
1/6		3 198 171	3 855 488	4 333 478	4 356 247	6 268 670	7 692 349
1/5		3 006 969	3 445 650	3 778 541	4 059 630	5 535 756	6 852 389
1/4	+2 EV	2 685 856	3 093 153	3 402 646	3 917 324	4 954 077	6 228 241
1/3.3		2 365 927	2 839 688	3 111 891	3 388 336	4 535 675	5 328 235
1/2.5		2 140 846	2 120 373	1 315 855	<b>1 800 000</b>	2 295 832	3 465 158
1/2	+3 EV (white)	651 931	400 472	308 743	292 397	417 247	341 929

*Attention: Bold denotes manually entered missing data.*